

# Astun News

## Welcome

There's a lot in this issue of Astun News to get excited about. Firstly an update to iShare, 5.6.4, that belies its designation, and news of our annual Conference which is taking place in Birmingham on June 20th - this is one not to miss... be sure to register in plenty of time.

<http://bit.ly/2q6rHZz>. Elsewhere we take a look at developments with Cleveland Police, an ADS update and the latest on INSPIRE... it hasn't gone away with Brexit!

[williammallbrook@astuntechnology.com](mailto:williammallbrook@astuntechnology.com)

## Astun User Conference



On the 20th June 2017 we will be hosting the second Astun User Conference at the Aston Business School in the centre Birmingham. This is the very successful venue we first used last year. At the time of writing over half the available places have been taken.

The morning session will comprise of a keynote presentation by Mike Saunt, Astun's founder, and customer presentations by Neil Stephenson, North Lincolnshire Council, Martin Laker, Bath & North East Somerset Council and Aidan Macdonald of Central Bedfordshire

Council. We will complete the morning session with a presentation by Dan Ormsby on Astun's recent work for the Planning Inspectorate.

The afternoon session is still in the planning stage but will take the form of demos and workshops focused on iShare and QGIS. There will be regular email updates between now and the Conference or you can check to see the latest news about the event on our website.

To avoid disappointment please REGISTER via our website - <http://bit.ly/2q6rHZz>

## iShare 5.6.2 and 5.6.4



Last Autumn we released iShare 5.6.0, it focused mainly on metadata capabilities. Outwardly 5.6.2 might seem a minor release when in fact it contains some significant enhancements which are of more than passing interest.

Studio ETL (Extract, Transform and Load) is a cut down version of Studio specifically designed to deploy to customer networks for pushing data up to our iShare in the Cloud systems, which will simplify cloud project rollouts and installations.

Other notable enhancements include:

- Unicode and apostrophe support means our Welsh customers can now configure Welsh language versions of iShare Maps / GIS, which is key to bilingual website delivery in Wales.
- Feature highlighting will benefit all customers and has the other benefits of being able to define the styles of highlighted features as SLDS
- Multiple projections means that iShare is now much better suited to projects that

involve the use of a global as opposed to a UK National Grid projection, for example Google Maps, OpenStreetMap etc.

- Finally a significant amount of work has been done reengineering the installer which is now more robust, not just for iShare itself but all its dependencies. In addition scripts to upgrade minor patch releases have also been undertaken.

In late 2016 we introduced 'Agile' to both software development and business processes within Astun. 5.6.2 was the first release that has been managed in an Agile way from start to finish, with a series of 8 (usually 2 week) sprint cycles with sprint planning, reviews, retrospectives etc.

Testing was done at the end of each sprint resulting in iterative improvements being captured during the development cycle. We all felt better for it! iShare 5.6.4 a patch release with minor enhancements and fixes was released in April.

You can find out more here: <http://bit.ly/1BoEGn1>

## ADS Update

We recently enabled support for the DPI WMS parameter for OS Premium (colour and greyscale) to support higher quality output in applications such as QGIS Print Composer.

While the official WMS specification does not define support for specifying the DPI (dots per inch) of an image produced by a WMS (Web Map Service) various WMS servers such as GeoServer, MapServer and QGIS Server provide support via a vendor parameter (additional

parameters supported by a given server but not part of the spec). The colour and greyscale OS Premium layers now support passing any of the commonly used DPI vendor parameters.

Following feedback the contrast has been improved of unmade paths from OSMM Topo in OS Premium. This is a very minor change but aids legibility particularly in rural areas.

## UKMap

We are now hosting the UKMap. The UKMap, which is focused on Greater London is based on 1:1,000 scale topographic mapping, which accurately

locates buildings, garages, property boundaries, roads, trees and a multitude of other features.



We are now hosting the UKMap

## Life's too short...



## INSPIRE Update



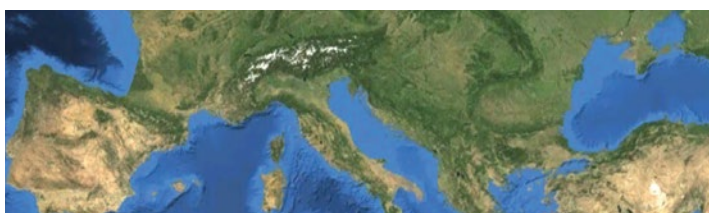
You may have heard (or perhaps hoped) that INSPIRE was one of those things that would quietly disappear in the wake of the June 2016 Referendum Result.

While official updates on INSPIRE have been scarce, the current guidance from the INSPIRE Project Lead for the UK is that it is not going to go away regardless of our long-term involvement in Europe. The benefits for cross-border data-sharing are too important to miss out on.

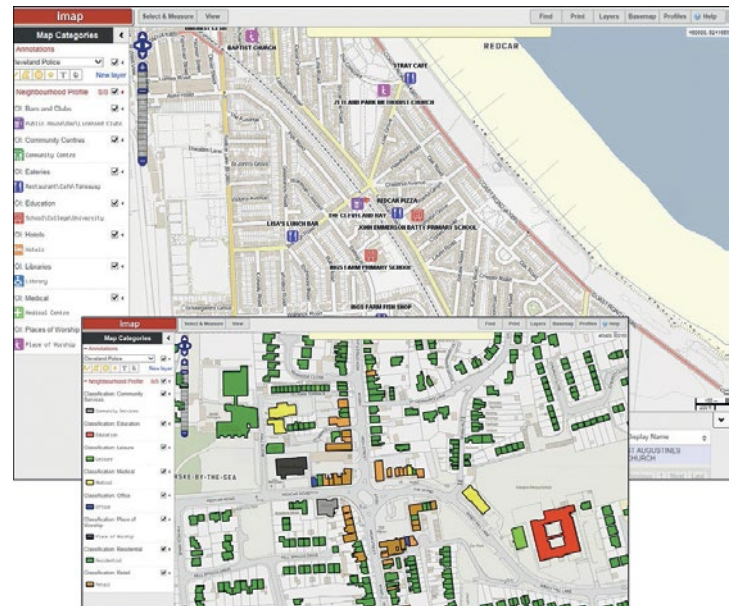
However, for those of you considering whether to embark on the INSPIRE Phase 2 Data Transformation stage the news is a little different. The INSPIRE Regulatory Fitness and Performance Report (REFIT), published in July 2016 (<http://bit.ly/2q6DMOp>) found that the perceived cost and complexity of the Data Transformation phase was hindering adoption across

all member states. Consequently working groups have been established to investigate options for making this process easier.

What does that mean for the average UK Local Authority worrying about implementing INSPIRE Phase 2? Guidance from the UK INSPIRE Project Lead is to hold fire for now, with updated information promised later this year. We'll provide further information in a later newsletter and will adapt our INSPIRE Phase 2 offerings to match the latest guidance. If you're still waiting to implement INSPIRE Phase 1 (metadata), then please get in touch to find out about our offerings.



## Cleveland Police



Cleveland Police started using a customised iShare application 'imap' nearly ten years ago.

Over time the application has evolved to become an indispensable tool, now based on iShare GIS, for targeting resources based on incidents and crimes taking place in districts and neighbourhoods. The system receives crime and incident data which can then be interrogated by crime type by district or neighbourhood and over time. The results are plotted on a map, enabling specific targeting of resources to hot spot areas.

More recently Astun has carried out a significant upgrade to the system, creating a plugin which enables analysis of police officer deployment in hot spot areas to see if they are being effective.

Each officer, whether a response officer, neighbourhood officer or traffic patrol officer is equipped with an Airwave radio which also includes a GPS transponder, which plots an officer on the move every ten seconds or every ten minutes if the officer is in a fixed location. It is possible to view breadcrumb trails on maps to see exactly where that officer has been. This data from 'Storm', Cleveland Police's command and control system is configured and automatically populates 'imap's Postgres database. Data is captured for a rolling 28 day analysis period and updated each morning with data from the previous day. The new 'Resource Monitoring Plugin' that Astun has created now makes it possible to view any resource

(officer) over a 28 day period, including breadcrumb trails on maps to see exactly where that officer has been. More importantly it is now possible to see resources plus crime and anti-social behaviour instances at a particular hotspot at a specific date and time and compare it to the same day and time, two weeks previously to enable resource planners to see if the resource changes that are being made to the hotspots are having the desired effect.

In the application a new 'ResMon' button has been added to the tool bar. When this button is clicked, it opens a new panel which enables the user to specify the parameters for the report, Where? (hot spot locations) What? (resources) When? (date and time within the previous two weeks). A 'Go' button causes the map to zoom into the selected area, highlights the hotspot using a white overlay with red border, and then shows all the GPS hotspots on the map which match the report timescale. It also generates a new window which contains several items:

- A heatmap for the timescale of the report, which show hours of the day on the vertical axis and day of the month on the horizontal.
- A chart that provides a breakdown of anti-social behaviour and crime.
- A chart that shows resource time spent within the area.