



EMERGENCY SERVICES WORKING WITH OUR CUSTOMERS



OS data helps get Cleveland Police out on the beat.

Cleveland Police have used Ordnance Survey data to add value to their information systems, helping streamline practices and saving hundreds of hours of officer time spent on administrative tasks. The iMap application gives officers better and more detailed information, making decision making and beat policing more efficient and effective.

“ By using OS data within the iMap application, we’ve managed to improve the way we update the information vital to local policing. Our officers are able to spend more time helping to strengthen and build resilience in the community. ”

CHIEF SUPERINTENDENT
ALASTAIR SIMPSON,
HEAD OF NEIGHBOURHOOD &
PARTNERSHIP POLICING.

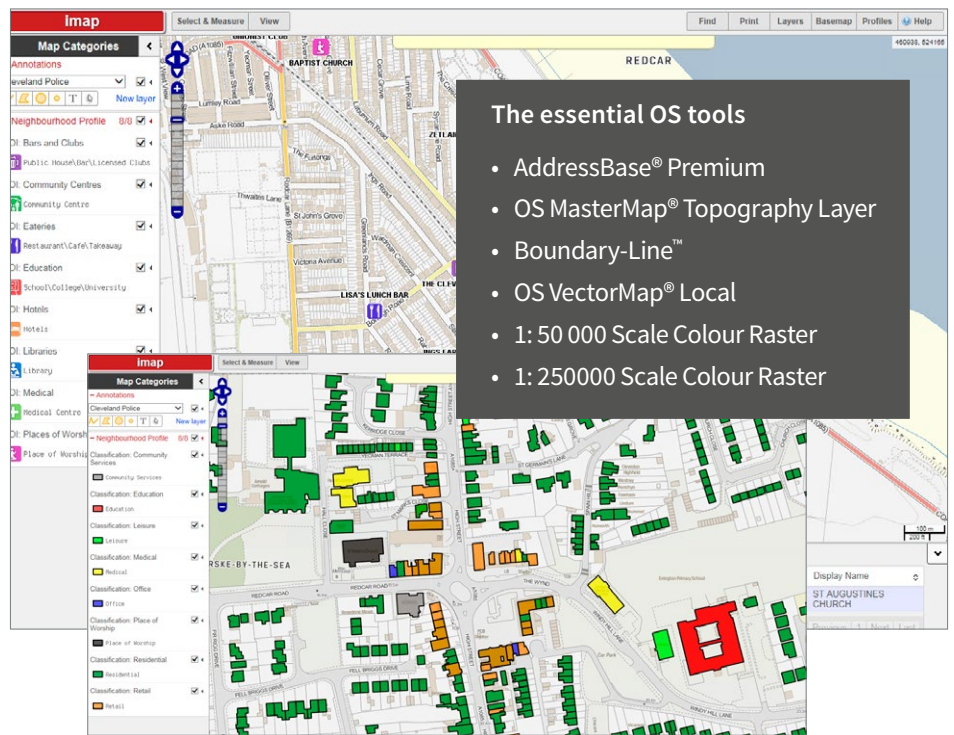


CLEVELAND
POLICE



What were the challenges?

- Cleveland Police cover an area of 230 square miles with a population of around 560,000. The Force delivers Neighbourhood Policing across four local authority areas containing 79 electoral wards.
- For each ward Neighbourhood Policing Teams keep detailed information, including demographics and records on important community, commercial and industrial buildings. This vital information is updated manually on a monthly basis.
- A more efficient, modern and automated solution was sought, allowing officers to focus directly on front line policing.



What was the solution?

Using Ordnance Survey data, Cleveland Police, in partnership with Sopra Steria, created a customised web-mapping application - iMap. The application was developed using the Astun Technology information sharing web-mapping tools.

Officers now have quick and easy access to accurate and up to date address information and mapping, at a range of scales.

By linking AddressBase Premium classification codes and grid references with OS MasterMap topographic identifiers, the iMap application

identifies building points of interest and property use. Additional features allow officers to query, analyse and superimpose information on crime and incidents, improving decision making and planning.

The iMap application uses AddressBase Premium, OS Boundary-Line, OS MasterMap Topography Layer, OS Vectormap Local, 1:50000 Scale Colour Raster and 1:250 000 Scale Colour Raster data.

What were the outcomes?

- Returning Neighbourhood Officers to frontline policing. Around 474 hours per year extra hours on the beat.
- Greater partnership working with the local authorities and agencies.
- Through the PSMA, Ordnance Survey data on iMap is accessible by all Force departments.
- Provides the intelligence needed for long-term problem solving activities and helps to identify opportunities to engage with the local community.
- Future proof against electoral ward changes.
- Enhanced awareness of locations of interest and warning markers.

Are you a public sector organisation?

The Public Sector Mapping Agreement (PSMA) includes a range of mapping data sets, which are free at your point of use, helping you to make further cost savings and efficiencies. To find out more, and discover how to start making savings, visit: os.uk/cleveland